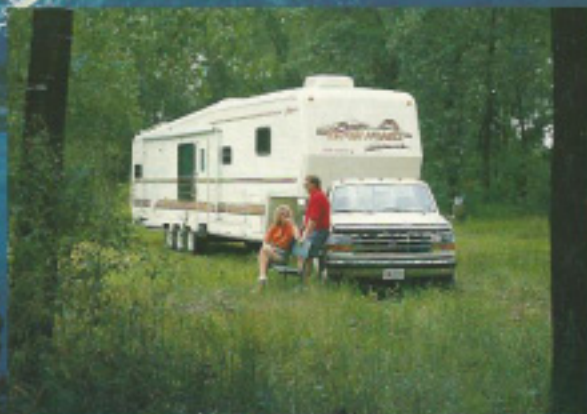




TETON HOMES[®]
SETTING THE INDUSTRY STANDARD SINCE 1967



1 9 9 3 F I F T H W H E E L S

A Garden tub with optional ceramic tile floor

B Bath vanity

C Makeup vanity with bedroom clothes

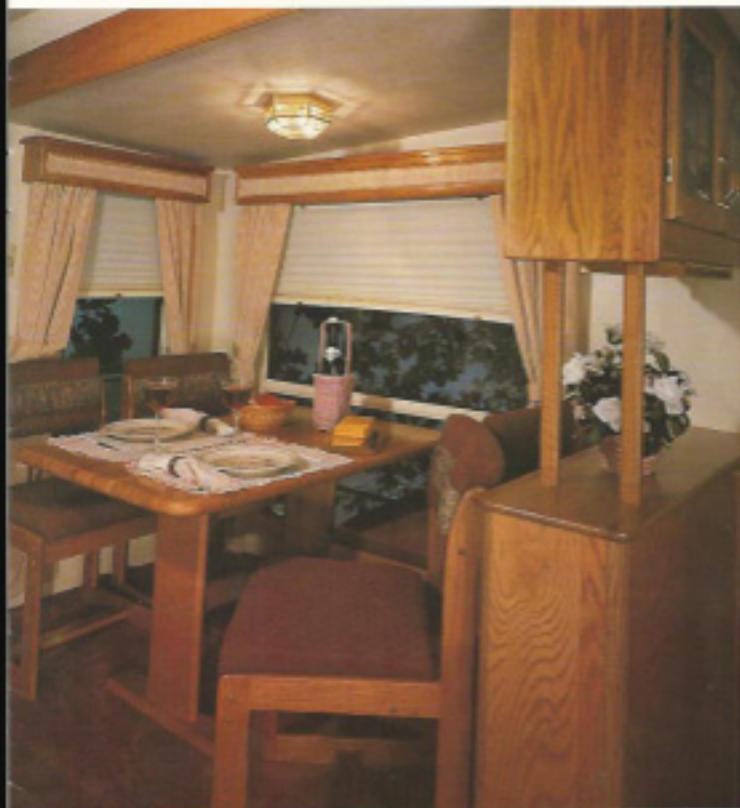
D Optional bedroom clothes



BATH & BEDROOM

Home. It's exactly what the 1993 Teton bedrooms feel like. Just because you're in a 5th Wheel doesn't mean you should sacrifice the conveniences and luxuries you were used to in your last house.





A New, wire rack bag holder

B Silent air purifier

C Optional plank oak floor

D Optional convection microwave
(Discontinues microwave
standard)

E Optional 10-speed blender

F Optional coffee maker

G Free-standing oak desks



Practical. Exactly what Teton kitchens are. Although they do please the eye, the main purpose is function. If it's there, it should be easy to use. After preparing one meal, you'll realize that Teton kitchens meet and exceed all your expectations of what a kitchen should truly be.

KITCHEN

FEATURES

Convenience. When you're living in a 5th Wheel, you want all the comforts of home. Over 200 standard features and many options not offered by others make Tiron the only choice when it comes to ease of living.



STORAGE



- Q** Rear trunk area with power cord, TV and phone hookup
- R** Storage in slide-out exterior
- S** Under-floor storage with slide-out storage baskets
- T** Basement storage
- U** Two 105-amp, 12-volt batteries "below floor" for more storage above
- V** 40-lb. LP bottles with sight gauges
- W** Two fiberglass slide-out storage trays for even more storage
- X** Cassinmark storage area



- A Optional 300-watt hand rail
- B Optional Moto-Set satellite system
- C Optional 300-watt wiring board
- D Lighted entry azalea handle
- E Optional Domestic side-by-side refrigerator
- F Optional electric steps
- G Quartz clock
- H Optional central vacuum
- I 12-volt fuse panel
- J Optional ceiling fan
- K Optional 12-volt yard lights
- L Optional washer/dryer
- M New enclosed TV cabinet (9A all models)
- N Optional 62" slide roller
- O New stereo system with dual cassette and CD player
- P New optional 1800 hydraulic leveling



Abundant. In Wyoming wide open spaces abound. Teton Homes has incorporated some of that vastness into their 1993 5th Wheels. Experience space like never before with more storage than you could ever need (is that possible?). In a Teton it is.



LIVING AREA

Quality. "Don't build it if you're not going to build it right." Bob's Ingram's corporate philosophy has not changed in the last 26 years. Today Ingram is still building the finest 5th Wheels on the market and continues to "set the industry standard" for 1995.

Home. Practical. Convenience. Abundant. Quality. The words that set them apart from all the others. Five words that make this year's 5th Wheel the best there is.



- A. Laminated wood
- B. Vinyl flooring
- C. Multiple color finishes
- D. Building blocks

SPECIFICATIONS

Standard features on the 1993 All-climate
Tesla Homes 5th Wheels:

DESIGN

1. The RL slideout in the living/dining room area with cleanpan capability
2. Wide layout
3. 4 depth in RL slideout
4. Over 6' of headroom in cathedral ceiling inside the RL slideout
5. All furniture shown on floorplans is standard
6. Full travel glide railers (1 or 2 see floorplans)
7. Hide-a-bed with 7" thick memory mattress
8. Durable table with four splined oak round chairs
9. Oak end tables (see floorplans)
10. Oak coffee table (see floorplans)
11. Oak night stands (see floorplans)
12. Choice of six color coordinated interiors
13. Entertainment center (some models with enclosed TV and stereo TV shelf)
14. Display cabinet with decorative glass door and mood lighting
15. Deodorizer mirrors in living room and bath
16. Battery operated clock
17. Queen-size bed (90x74 or 90x80) with 5 1/2" coil mattress (all corners chopped at 45 degree angles for more room in bedroom)
18. Deeper front mirrored wardrobe area
19. Hiding bedroom cartons with antique brass handle and latch
20. Oak headboard
21. Brass vanity stool with color-coordinated cushion
22. Hinged pedestal storage bed (NA with optional bedroom slide-out)
23. Bedroom pillows and bedspread with pillow wall and two throw pillows
24. Fabric covered valances in bathroom
25. Oak valances in toilet and bath vanity area with mirrored inserts
26. Oak valances in living room with color-coordinated fabric inlay
27. Oak valances in kitchen with color-coordinated panel inlay
28. Full-length curtains in living room and dining room area
29. Daylight shades in living room, bedroom and RL slide-out
30. Two (2) living room throw pillows
31. Solid oak face-frame cabinets
32. Oak veneer wall paneling
33. Solid oak mirrored panel cabinet doors
34. Solid oak drawer fronts
35. Roll-formed countertops with backsplashes
36. Data heavy duty enameled drawer roller guides
37. Slideware tray drawer
38. Galley tray
39. Slide-out bread board
40. Two hardwood cutting board sink covers (NA with Currier-type countertop)
41. Stainless steel 18" out sink tray
42. Slideout pantry (NA in Monterey, Austin, Ringwood, Cooper)
43. Deep, wide rack lazy Susan in rear upper kitchen cabinet
44. Metal shelf in rear overhead cabinets of all rear lockers
45. Metal mail blinds in kitchens and bath
46. Oak shelf behind sink
47. Solid oak vanity tops
48. Oak stained-panel doors and drawer fronts in bathroom
49. Medicine cabinets with oak inside rail
50. Deep enameled passage doors
51. Full length dressing mirror built into a bathroom door
52. One-piece fabric ceiling that eliminates most trim pieces

53. 32-oz. heat set polyester carpet
54. 1/2" rebound carpet pad
55. Lockdown with no wax finish in kitchen
56. Lockdown at entry way with finished edge throw rug

CHASSIS

57. Dexter 6000-lb. axles
58. 3000-lb. multi-leaf spring on each side on the door side
59. 3500-lb. multi-leaf spring on each side on the slide-out side
60. Two shock absorbers per axle
61. 12" x 3 1/2" heavy duty electric brakes on each axle
62. Brakes-side axles - 16.5" tires - on 3rd floorplans
63. 31 axle-ends - 14" U-bolts - on 37 and 40 floorplans
64. Spare tire with painted rim
65. 8-lug painted tire rims
66. 17" heavy-duty axle main frame
67. 12" rail and angle crossmembers
68. Revised 10-gauge x 10 1/2" steel swinggers
69. 2" x 1/2" 11-gauge steel tubing in goose-neck super structure
70. Rails in goose-neck governed 10-gauge steel
71. 1/2" steel track plates
72. 1/2" steel plate in generator compartment
73. 1/2" steel plate skidbars
74. 8000-psi axle load rated to over 17,000-lb.
75. Triple lock-up steps - powder coated to prevent rusting
76. Rear leveling electric independent jacks with rubber shock feet (standard)
77. 8/16 rear jacking manual independent jacks with 30" travel
78. All slide-out components part of the chassis (BOR slide-in bed base)
79. Two "eye screw" driven slide-out power cars
80. Two telescoping T slide-out support tubes with roller bearing support
81. Red oxide primer on all painted areas of frame to prevent rusting

INSULATION

82. 1/2" polystyrene insulation board laminated to all interior sidewalls, endwalls and ceiling
83. Expanded polystyrene insulation board is covered with kraft paper backing on both sides
84. Oak veneer wall panels laminated over 1/2" poly insulation board
85. Completely enclosed and insulated underfloor with R-11 + 1/2" polystyrene board - composite R25 insulation value (optional Flexic Tech guarantee to 30% see order form for more info)
86. Seawall insulation is an R5 fiberglass + 1/2" polystyrene board - composite R11 insulation value
87. Endwall insulation is R11 fiberglass + 1/2" polystyrene board - composite R17 insulation value
88. Ceiling insulation is R11 fiberglass + 1/2" polystyrene board - composite R25 insulation value

CONSTRUCTION

89. High density polyethylene underbody
90. Hauling tanks supported with 1" steel tubing and 3/8" plywood
91. Full size aluminum panels for holding and water tanks
92. Floor and slide-out decking 1/2" thick oriented strandboard/Structurwood with 10-year warranty against delamination
93. Revised bath floor 1/2" thick Structurwood with closer feet on bottom
94. Goose-neck decking 1/2" tongue and groove plywood
95. Floor decking 1/2" thick oriented strandboard/Structurwood
96. Nominal 2" framing lumber in sidewalls, endwalls and slide-outs

97. Two 1 1/2" x 3" steel tube headers over RL slide-out
98. Wood bow string truss roof
99. Exterior film fiberglass siding laminated to foam with 10-year warranty
100. End caps, underbody, underdeck, ladder skirts, rear bumper and exterior storage drawers are one-piece gel-coated/fiberglass
101. New front cap provides for a deeper front closet
102. EPDM rubber roof with 10-year warranty
103. Dark tinted, flush-mounted, automotive-style safety glass windows with lockers covers and interior clamp rings

PLUMBING

104. Polypropylene water lines with enclosed low-point drains and copper fittings
105. 35 gallon fresh water tank
106. Dual 40-gallon grey water tanks (single tank on Bellmore, Cooper, Los Vegas)
107. 40-gallon black water tank
108. 35-gallon gas/electric water heater with Direct Spark Ignitor
109. All tanks enclosed within heated floor area
110. Sewer flush system for grey and black water tanks with vacuum breaker
111. Dump valves enclosed with side access
112. Double-level porcelain sink in kitchen
113. Porcelain sink sink in bathroom with pop-up stopper and overflow
114. One-piece fiberglass tub/shower with corner seat, towel bars and brass and glass enclosure with designer graphics on glass
115. Single lever brass tub faucet
116. Single lever brass shower faucet
117. Solid brass single lever level faucet with two-year warranty
118. Residential-type faucets - kitchen single lever
119. Water floor system
120. Washer and dryer prep
121. 12 volt demand water pump with Sta-Rite accumulator
122. Direct city water hookups
123. China toilet with residential toilet seat and lid

LP GAS BURNING

124. Dual 40-lb. LP tanks with sight gauges (both on slide-out side of coach)
125. Pressure regulator with automatic backflow changer
126. LP leak detector
127. Smoke detector
128. Dual 21,000-BTU forced-air furnace on 37' and 40' models
129. 41,000-BTU forced-air furnace on all 37' and 34' models

COMMON ELECTRICAL

130. 12-volt master and directional lights
 131. 12-volt break-away safety switch
 132. 12-volt baggage compartment lights
 133. Nine-spacer fuse labeled fuse block for running lights, jack legs, charge line, etc.
 134. Surgeless 7-way connector (2-way with side-by-side refrigerator)
 135. Front jack switches enclosed in lockable compartment
 136. Two 105-amp deep cycle 12-volt batteries in fiberglass drawer in radius wrap area with battery trays
 137. LED parking lights (one each side)
 138. "Residential-type" electrical clear bell
 139. Pre-wired for solar panel with flush-mounted receptacle on roof
 140. 12-volt deluxe lighted entry assist handle with brass name on it
 141. 12-volt high light
 142. 12-volt entry step light
 143. 50-amp power cord *
 144. 30-amp adaptor for 50-amp power cord
 145. Cable TV hookup *
 146. Telephone hookup *
- (* all in same compartment)

147. Two exterior receptacles—one front side, one rear side
 *148. 75-amp Total Engineering Solid State power converter (very quiet)
 149. Retractable slide-out room power cord on steel galva

INTERIOR - BATHROOM

150. 12-volt master disconnect switch
 151. Fluorescent ceiling lights
 *152. More accurate systems monitor panel needs no calibration
 *153. Digital readout of battery status
 154. Lighted wardrobes
 155. Powered roof vent in bathroom toilet area
 156. Pre-wired for optional powered roof vent (see options - Intertec Inc.)
 *157. 12-volt switch plates with pre-printed labels
 158. 12-volt breaker system for all interior components
 159. 12-volt receptacles at TV locations
 160. 120-volt breaker system
 161. GFI protection for the bathroom, kitchen and exterior receptacles
 162. Pre-wired for optional washer/dryer
 163. 120-volt recessed directional can light(s) in living room ceiling above recliner position(s) with dimmer switches
 164. 120-volt polished brass wall-mounted dual candleless lights each end of table-a-bed with dimmer switch
 165. 12-volt fluorescent above sofa
 166. 120-volt octagonal ceiling light above dinette with dimmer switch

EXTERIOR

167. Roof rack and ladder
 *168. Ribbed foam tape around windows, doors instead of putty
 *169. Rain diverters on four corners of roof/hood/wall joint
 *170. Baggage doors with new improved locks, baggage areas covered and with 12-volt lights
 171. Large rear tank for spare tire, power cord, TV and other hookups
 172. Large trunk behind sofa with dumb and keylocks (except Las Vegas)
 173. Rear rack slide/docking (front on Las Vegas)
 174. Built-in mounted wrap-around led lights
 175. Sewer hose storage built into chassis with locking hatch door
 176. Operable rear windows (N/A Capet and Las Vegas)
 177. Slider windows at ends of RL skidless
 178. Two fiberglass underfloor exterior storage drawers on floor side
 179. Large 27" x 23" storage area on door side rear compartment

INTERIOR

- *180. Cass, amber shaded double skylight with interior pleated shade over tub/shower (opt. in kitchen area)
 181. Cedar-lined wardrobes (front wardrobe is carpeted)
 *182. Magazine racks in enclosed toilet compartments (N/A Monterey)
 183. Long stemmed glass racks in most models
 184. Swivel positive cabinet door latches
 185. Brass with oak inlay cabinet pulls including bathroom
 186. Solid oak assist handles
 187. Emergency exit window in bedroom (storm window N/A)
 188. Emergency exit window behind sofa in living room (storm window N/A)
 189. T of ceiling height in center living room
 190. Thru-rod pull on vanity floor map door (only on Capet and Las Vegas)
 191. Full bathroom storage under bath (carpeted, lighted, insulated and heated) with exterior access on both sides
 192. Over 6' of headroom in passageway area

APPLIANCES

- *183. Whirlpool gas/electric microwave oven
 *184. Domestic 2807.3 two-way refrigerator with auto defroster (opt. 1, 2, 3, 4, 5)
 195. Midglowwood 4 burner range with spines and window in range door
 *196. Domestic 15,000 BTU tank for high performance central AC, with wire harness and wall thermostat (opt. second AC not into main ductwork)

TV AND STEREO

- *197. Built-in Emerson 120-volt 486TV stereo with dual cassette deck, graphic equalizer and compact disc player
 *198. Upgraded stereo speakers
 199. Exterior radio antenna
 *200. Wiegert solid state fold-down TV antenna with built-in cord in both areas
 201. Wiegert TV distribution system
 202. TV outlets in living room and bedroom
 203. Pre-wired for VCR in living room
 *204. When optional TV and VCR are factory installed the sound is fed into the main stereo speakers

SEAT - SEAT SIZES

	RL	BDL
37 Monterey*	12' 0"	5' 6"
38 Nashville	12' 0"	5' 6"
34 Austin	12' 0"	5' 6"
34 Kaysman	14' 0"	5' 6"
37 Baltimore	15' 0"	5' 6"
37 Miami	15' 0"	7' 0"
40 Copper - two bedroom	12' 0"	5' 6"
40 Las Vegas*	12' 0"	5' 6"
40 New Orleans	14' 0"	7' 0"
40 Tampa	14' 0"	7' 0"
40 Tall	10' 0"	7' 0"

N/A, skidless are standard.
 *Domestic sizes are optional.
 *Domestic size or upgraded size for 1983 Composite "X" values.
 R25 - Ceiling, R25 - Floor, R11 - Seiwels, R17 - Dropcaps

OPTIONS

EXTERIOR

- VEGET Plant, level, blue
- FLAT MICHELIN Blue, Radius, Rosewood
- Oak plank floor in kitchen/living area
- Composite tile floor in bath and toilet area
- Ceramic tile counter-top with oak inlay - kitchen
- Ceramic tile counter-top with oak inlay - bath
- Capet mirrors - clear plastic in seats
- Sectional ELD table-a-bed - Tampa only
- Innovator door kit with brass glitters
- Solid oak range around RL slide-out
- Decor changes

EXTERIOR

- Aluminum mug wheels - five total (32 - 34)
- Aluminum mug wheels - seven total (37 - 40)
- Mac-Ryde suspension - Tandem (32 - 34)
- Mac-Ryde suspension - triple (37 - 40)
- Steel roller - 41" wide
- Roller electric strips
- Built-in floor safe - 17" x 18" x 18"
- RVW hydraulic level system - manual N/A

EXTERIOR

- Automatic winterizing system
- Acrylic insulation package with heat pads, winterizing system
- Garden shower to replace garden tub

EXTERIOR

- Second 25,000-BTU furnace - standard on 37 and 47

BATHROOM

- 12-volt flood/vent lights in four corners
- Deluxe security system
- Stemars 35-watt solar battery charger - roof
- Generator prep - standard with generator
- 25-gallon gas tank for generator - standard with gas generator
- 33 lb. 1/2 liquid vapor bottle for generator - standard with LP generator
- T-D-Over generator with remote and 20-gallon gas tank
- 6.5 Ocean generator with remote and 33 lb. LP bottle

BATHROOM - INTERIOR

- Second 15,000-BTU air conditioner
- Heat strip for central air conditioner
- Heat strip for second air conditioner
- Callig, paddle fan - N/A on Capet, Las Vegas
- Intertec 12-volt vent fan with rain sensor

EXTERIOR

- AIZ 9000 Series awning
- Electric window awnings, 1, 2, 3, 4, 5
- Land-A-Hand folding exterior hand out
- Pull-out storage bin under bath floor - N/A on 37

EXTERIOR

- Screen windows - N/A on emergency exits

EXTERIOR

- Built-in dinette with oak top ELD beer standing
- Clear domed skylight with shade in kitchen
- Pull-out seating board in kitchen

EXTERIOR

- Front passageway bedroom slide-out
- TD&H long bed in bedrooms - T slide-out bedroom only
- Storage cabinet with two drawers ELD shirt chest
- Rear bedroom slide-out - Capet, Las Vegas

APPLIANCES

- Conversion microwave - Sharp space maker
- Burner top with drawers below - no range
- Domestic 2807.3 three-way refrigerator with auto defroster
- Built-in ice maker for Domestic 2807 refrigerator
- Domestic 7030.2 side-by-side refrigerator - 10 cu. ft. *yes*
- Based oak panel doors for refrigerator
- Roper dishwasher - N/A on Capet, Las Vegas *yes*
- Based oak panel door for dishwasher
- Built-in Nutone blender with motor
- Specmaster coffee maker - N/A on Monterey, Austin, Kingman
- Built-in vacuum with attachments and 30 tubes *yes*
- Whirlpool stack type washer/dryer *yes*

TV AND STEREO EQUIPMENT

- VCR built-in VCR with remote *yes*
- VCR built-in 23" AC color TV with remote - living room
- VCR built-in 23" AC color TV - Las Vegas only
- VCR built-in 13" AC/DC color TV with remote - bedroom
- Based "Concord" electric TV antenna
- More-Set TV satellite dish

EXTERIOR

- Folding wood chairs with padded seats - set of two
- Folding "lewis" director chairs - set of two
- Weld 1,350 truck striping kit

RECOMMENDATIONS

- **Hot climate: second 15,000-BTU air conditioner and storm windows
- **Cold climate: storm windows and Arctic package

TETON 5TH WHEEL FLOORPLANS WITH



30' MONTEREY 36.2' WY 35.0' 120' WY 275' 120' WY 275' 120' WY 275'



30' MONTEREY 36.2' WY 35.0' 120' WY 275' 120' WY 275' 120' WY 275'



34' AUSTIN 36.2' WY 35.0' 120' WY 275' 120' WY 275' 120' WY 275'



34' AUSTIN 36.2' WY 35.0' 120' WY 275' 120' WY 275' 120' WY 275'



34' NASHVILLE 36.2' WY 35.0' 120' WY 275' 120' WY 275' 120' WY 275'



34' NASHVILLE 36.2' WY 35.0' 120' WY 275' 120' WY 275' 120' WY 275'



37' BALTIMORE 36.2' WY 35.0' 120' WY 275' 120' WY 275' 120' WY 275'



37' BALTIMORE 36.2' WY 35.0' 120' WY 275' 120' WY 275' 120' WY 275'



37' KINGMAN 36.2' WY 35.0' 120' WY 275' 120' WY 275' 120' WY 275'



37' KINGMAN 36.2' WY 35.0' 120' WY 275' 120' WY 275' 120' WY 275'



37' MIAMI 36.2' WY 35.0' 120' WY 275' 120' WY 275' 120' WY 275'



37' MIAMI 36.2' WY 35.0' 120' WY 275' 120' WY 275' 120' WY 275'

WEIGHTS SHOWN DO NOT INCLUDE OPTIONS

BEDROOM SLIDE-OUTS SHOWN ARE OPTIONAL

EXTRA LARGE SLIDEOUTS 13' TO 16' STANDARD



65300
1 m/ly



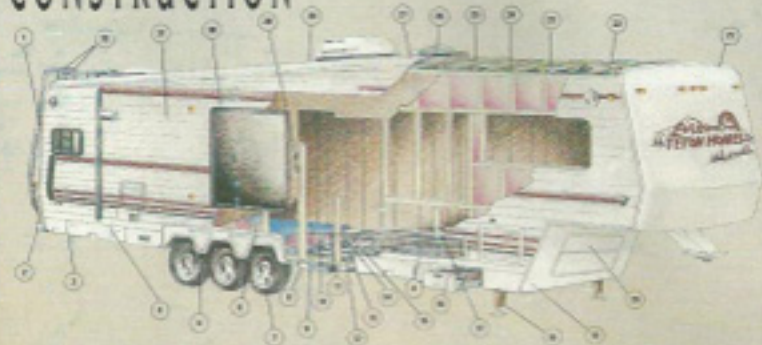
WEIGHTS SHOWN DO NOT INCLUDE OPTIONS

BEDROOM SLIDE-OUTS SHOWN ARE OPTIONAL



Important Note: The dry weights shown are approximate and may vary with construction or options added. Due to Texon's continual product improvement, specifications and features are subject to change without prior notification or obligation.

CONSTRUCTION



TETON OFFERS 10-YEAR ULTRASTRUCTURE WARRANTY ON 1993 MODELS!

- 1 All fiberglass rear cap with continental spare tire cover
- 2 Fiberglass, automotive-style bumper
- 3 Fiberglass wrap to a fully-enclosed underbelly
- 4 Abundance of exterior storage
- 5 Contoured fiberglass fender skirts
- 6 1/2" expanded polystyrene board
- 7 1 1/2" x 3 1/2" x 8' full or 9' 1/2" x 16' subframes
- 8 Triple fold-away steps
- 9 1/2" thick oriented strand board - Weyerhaeuser antitermite-treated and screwed to the steel
- 10 6 x 11 fiberglass insulation with 1/2" polystyrene
- 11 10-gauge steel axles
- 12 12" high x 3" wide joint & brace have reinforced with 4" structural steel tubing at the side over 2" with MacHyd
- 13 4" round spool hose runs through the crossmembers
- 14 Open rod and angle crossmembers 3" in center (at least)
- 15 .030" polystyrene underbelly below the polystyrene
- 16 Underfloor fiberglass battery tray with two 320-amp deep-cycle batteries
- 17 2x2 wall framing with full fiberglass insulation
- 18 Electric front jacks with independent operation
- 19 Full fiberglass underfloor cap
- 20 Ductwork & storage area
- 21 Full fiberglass front cap with recessed clearance lights
- 22 6" fiberglass roof insulation
- 23 Central air conditioning duct through the motor
- 24 Ceiling - 24-oz. all-white Dura with a geometric nylon-backed headliner consisting of a 14-oz. Dura with a 10-oz. Sacker
- 25 "Aqua" bonding system
- 26 Roof fully sheathed with 1/2" decking
- 27 One-piece DPM rubber roof laminated to 1/2" decking

- 28 All-sliding roof for extra interior headroom
- 29 Upholstered motorhome seats
- 30 Full view rearward, fixed picture windows, flush mounted
- 31 Fiberglass siding bonded to physical sheathing
- 32 Roof rack and ladder for extra exterior storage

Teton's 10-Year Limited Warranty on the Ultrastructure

Teton Horace offers you that 10-year limited warranty on the Ultrastructure of a 1993 Teton Big Wheel, in addition to various other 10-year warranties included on this product.

This warranty is subject to the individual limitations of the specific supplies involved, and is subject to their rules and guidelines regarding their products. Teton provides the warranty on the Ultrastructure as listed.

Items included in this 10-year warranty package are:

1. The Ultrastructure framework by Teton Horace
2. The DPM rubber seal by DPM
3. Extreme Fiberglass siding by Fibon
4. The 1/2" antitermite floor by Weyerhaeuser

5. The 1/2" antitermite roof decking by Weyerhaeuser

Teton Horace warrants its Ultrastructure framework, a unique blend of wood and steel for 10 years. The Ultrastructure includes the 12" x 6" steel frame and the wood framing in the sidewalls and the roof. If, during the ownership of the original buyer, any part of the Ultrastructure fails to perform properly because of faulty workmanship by Teton Horace, it will be repaired without charge to either party or else if the proper warranty claim procedures are followed, 10-year parts are covered under the standard 1-year 1-year limited warranty option otherwise indicated. See your owner's manual and warranty booklet for further details.

Ask about the TCI - Teton's Owner's Club and how you can join today!

Corporate office: 3283 North 9 Mile Road • Casper, Wyoming 82504
Mailing address: PO Box 2547 • ARB, Wyoming 82444
Phone: (307) 235-0525
FAX: (800) 238-8428
Phone Hours: Call for daily schedule
Phone Closed: Week of July 4th -
Week of Christmas



DEALER

FRY PEEBLES TRAVELAND
601 WEST YELLOWSSTONE
CASPER, WY 82501
(307) 677-8350